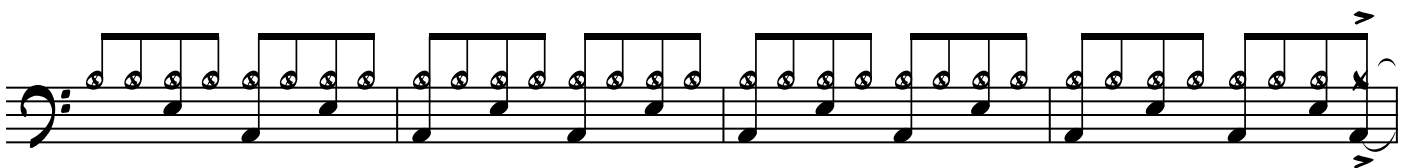
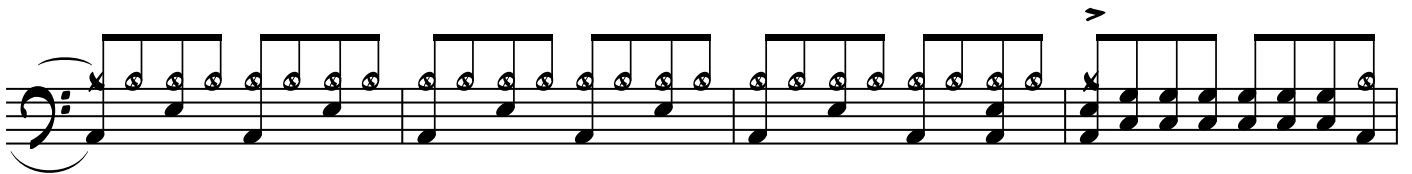
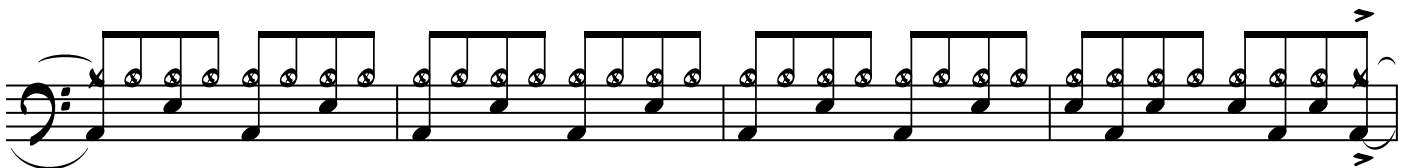
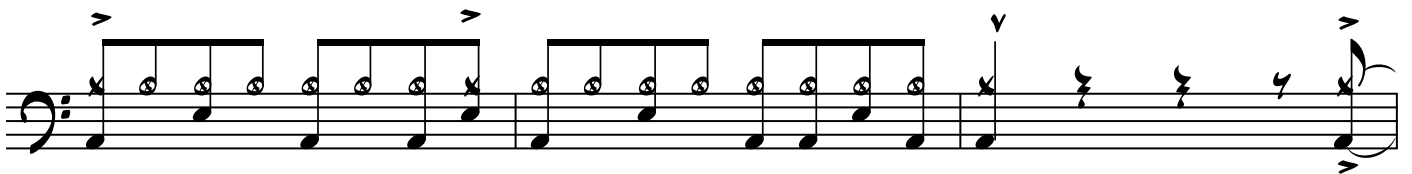
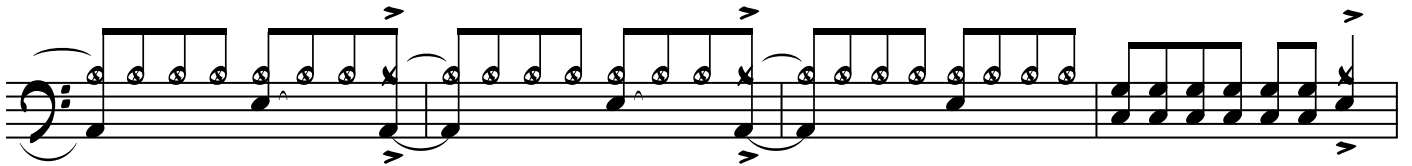
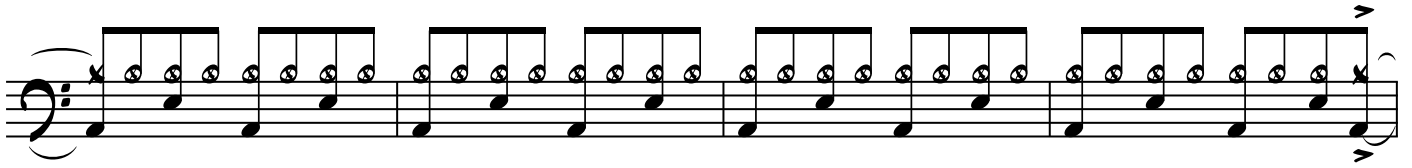
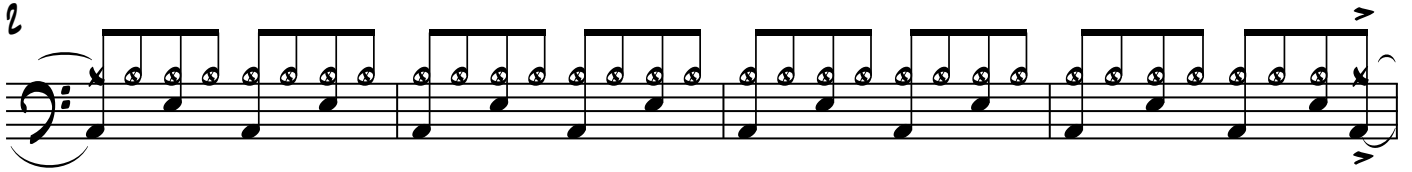




2



First musical staff, bass clef, featuring a continuous eighth-note pattern with a 3/8 time signature at the end.

Second musical staff, bass clef, featuring a continuous eighth-note pattern with some notes beamed together and a fermata over a pair of notes.

Third musical staff, bass clef, featuring a continuous eighth-note pattern.

Fourth musical staff, bass clef, featuring a continuous eighth-note pattern with some notes beamed together and a fermata over a pair of notes.

LEAD

Fifth musical staff, bass clef, featuring a continuous eighth-note pattern.

Sixth musical staff, bass clef, featuring a continuous eighth-note pattern.

Seventh musical staff, bass clef, featuring a continuous eighth-note pattern with some notes beamed together and a fermata over a pair of notes.

Eighth musical staff, bass clef, featuring a continuous eighth-note pattern.



